

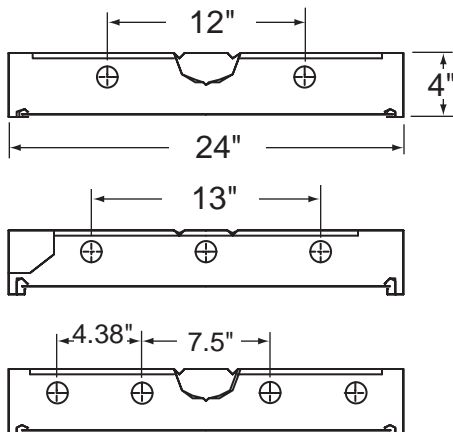
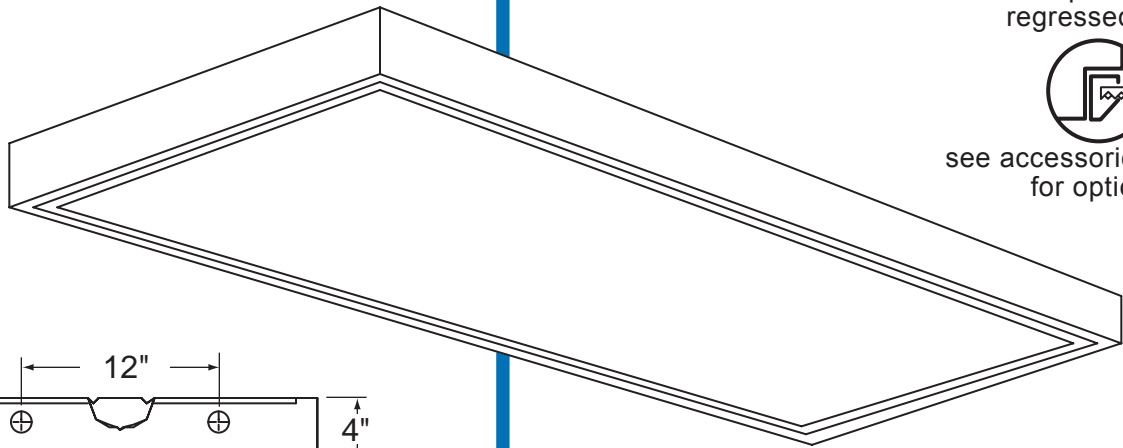
SERIES 124

2X2, 2X4 & 2X8
Surface Modular

optional
regressed door



see accessories section
for options



UNION MADE IN THE USA.

FEATURES:

- POST PAINTED HIGH REFLECTANCE POWDER COAT FINISH
- SPRING LOADED LATCHES - STANDARD
- FULLY GASKETED REVERSIBLE T HINGED DOOR
- FLUSH OR REGRESSED DOOR - STEEL OR OPTIONAL ALUMINUM
- CHOICE OF LENSES, LOUVERS OR DIFFUSERS
- UL LOW DENSITY OPTIONAL

ORDERING:

NOMINAL SIZE	LAMPS	CATALOG NUMBER
2' X 2'	2-FBO32	124-* -12A-2UT8 +
2' X 2'	2-FO17	124-* -12A-224T8
2' X 2'	3-FO17	124-* -12A-324T8
2' X 2'	4-FO17	124-* -12A-424T8
2' X 4'	2-FO32	124-* -12A-248T8
2' X 4'	3-FO32	124-* -12A-348T8
2' X 4'	4-FO32	124-* -12A-448T8
2' X 8'	4-FO32	124-* -12A-248-2T8
2' X 8'	6-FO32	124-* -12A-348-2T8
2' X 8'	8-FO32	124-* -12A-448-2T8

INSERT VOLTAGE AT END OF CATALOG NUMBER





NOTES:

1. "12A" DENOTES AN ACRYLIC .110 PATTERN 12 LENS PROVIDED AS STANDARD UNLESS A SHIELDING OPTION IS SPECIFIED
2. + SPECIFY 6" FBO32 OR 1 5/8" FBO31 LAMPS
3. SPECIFY SERIES 128 FOR ALUMINUM DOOR
4. * INSERT "R" FOR REGRESSED DOOR
5. 3 LAMP PROFILE NOT RECOMMENDED FOR PENDANT MOUNTING

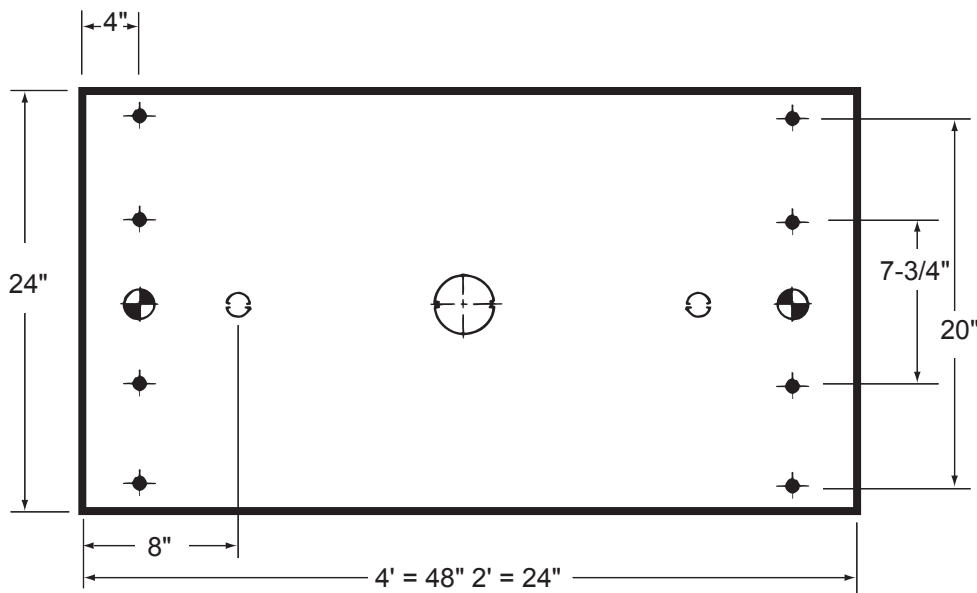
MANUFACTURING
1715 KIBBY ROAD - MERCED - CALIFORNIA - 95340
(209) 723-9120 - FAX: (209) 723-9131

SALES OFFICE
14722 WICKS BLVD. - SAN LEANDRO - CALIFORNIA - 94577-6718
(510) 667-6950 - FAX: (510) 667-6959

BACK DETAIL

	1/4" DIA. HOLE
	1 1/16" K.O.
	7/8" K.O.
	3" K.O.

Back detail symbols



8' fixtures are same as 2-4' fixtures end to end.

NOTE
All fixtures must be installed, wired and grounded in accordance with the National Electric Code and all other applicable codes.

!!! WARNING !!!
RISK OF FIRE OR ELECTRICAL SHOCK. ELECTRICAL PARTS MAY BE DAMAGED WHEN DRILLING OR USING "TEK" SCREWS FOR INSTALLATION OF MOUNTING HARDWARE. CHECK ENCLOSED WIRING AND COMPONENTS. USE CAUTION WHEN DRILLING "TEK" SCREWS INTO A BLIND AREA. TO PREVENT WIRING DAMAGE DO NOT EXPOSE WIRING TO SHARP EDGES.

