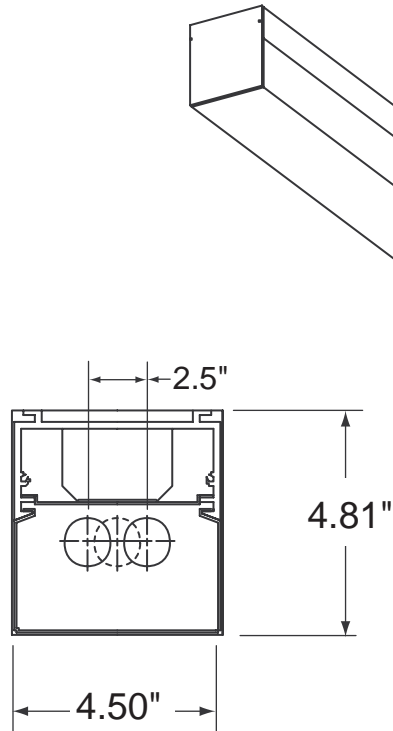


# SERIES 183

Extruded Aluminum  
Corridor or Wall Mount



UNION MADE IN THE USA.



## FEATURES:

- POST PAINTED HIGH REFLECTANCE POWDER COAT FINISH ON ALUMINUM EXTRUSION
- AVAILABLE WITH WHITE OPAL DIFFUSER OR CLEAR PRISMATIC LENS
- ONE PIECE DIFFUSER UP TO 8' LONG
- RATED FOR LOW DENSITY CEILINGS
- AVAILABLE IN OPTIONAL COLORS
- UNIQUE LENS LOCKING SYSTEM

## ORDERING:

NOMINAL SIZE	LAMPS	CATALOG NUMBER
4½"X 2'	1-FO17	183-* -124T8
4½"X 2'	2-FO17	183-* -224T8
4½"X 3'	1-FO25	183-* -136T8
4½"X 3'	2-FO25	183-* -236T8
4½"X 4'	1-FO32	183-* -148T8
4½"X 4'	2-FO32	183-* -248T8
4½"X 6'	2-FO25	183-* -136-2T8
4½"X 8'	2-FO32	183-* -148-2T8
4½"X 6'	4-FO25	183-* -236-2T8
4½"X 8'	4-FO32	183-* -248-2T8

INSERT VOLTAGE AT END OF CATALOG NUMBER

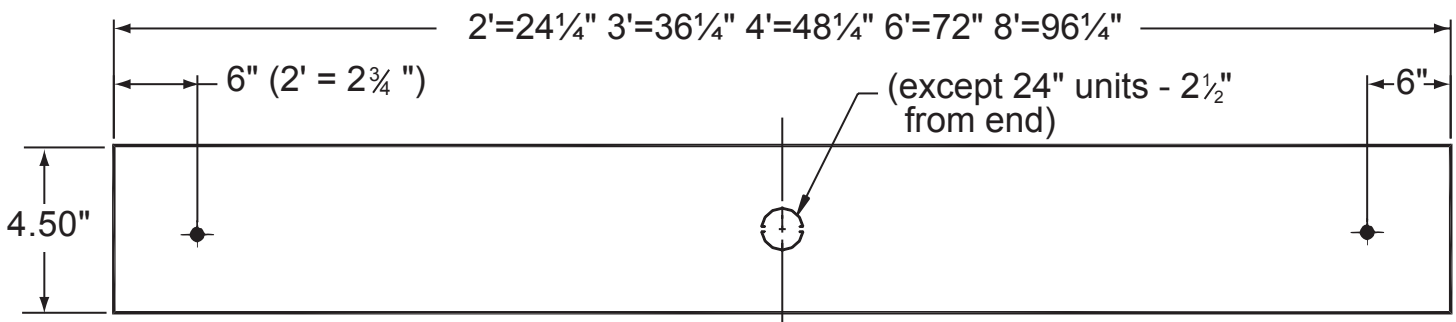
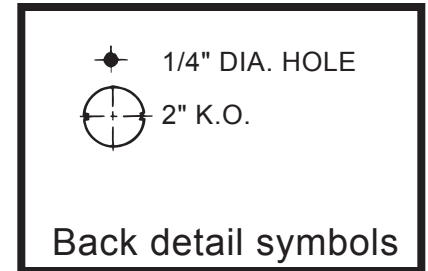
## NOTES:

1. \* SPECIFY "A" FOR OPAL ACRYLIC DIFFUSER OR "P" FOR CLEAR PRISMATIC LENS WITH LINEAR SIDE PRISMS
2. ALL FIXTURES PROVIDED WITH FULL LENGTH LENS

MANUFACTURING  
1715 KIBBY ROAD - MERCED - CALIFORNIA - 95340  
(209) 723-9120 - FAX: (209) 723-9131

SALES OFFICE  
14722 WICKS BLVD. - SAN LEANDRO - CALIFORNIA - 94577-6718  
(510) 667-6950 - FAX: (510) 667-6959

## BACK DETAIL



### NOTE

All fixtures must be installed, wired and grounded in accordance with the National Electric Code and all other applicable codes.

### !!! WARNING !!!

RISK OF FIRE OR ELECTRICAL SHOCK. ELECTRICAL PARTS MAY BE DAMAGED WHEN DRILLING OR USING "TEK" SCREWS FOR INSTALLATION OF MOUNTING HARDWARE. CHECK ENCLOSED WIRING AND COMPONENTS. USE CAUTION WHEN DRILLING "TEK" SCREWS INTO A BLIND AREA. TO PREVENT WIRING DAMAGE DO NOT EXPOSE WIRING TO SHARP EDGES.

