



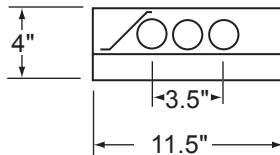
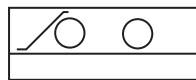
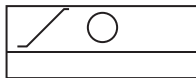
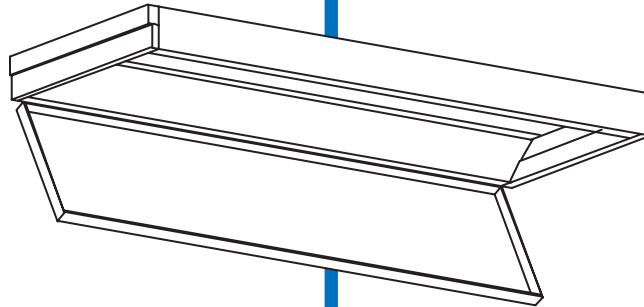
www.wlmd.com

SERIES 331

1X4

Clean Room Class 100

Wet Location Troffer



FEATURES:

- POST PAINTED HIGH REFLECTANCE POWDER COAT FINISH
- CAULKED AND GASKETED (CLOSED CELL POLYURETHANE) TO AID IN KEEPING PARTICULATE MATTER FROM ENTERING THE ROOM.
- COMPATIBLE WITH BOTH 1" AND 1 1/2" T-BAR CEILINGS
- UL LISTED FOR WET LOCATIONS COVERED CEILING INSTALLATIONS
- CONTINUOUS GASKETED AND CAULKED DOOR SECURED USING 6 SCREWS



UNION MADE IN THE USA.

ORDERING:

NOMINAL SIZE	LAMPS	CATALOG NUMBER
--------------	-------	----------------

1' X 4'	1-FO32	331-12A-148T8
1' X 4'	2-FO32	331-12A-248T8
1' X 4'	3-FO32	331-12A-348T8

INSERT VOLTAGE AT END OF CATALOG NUMBER

NOTES:

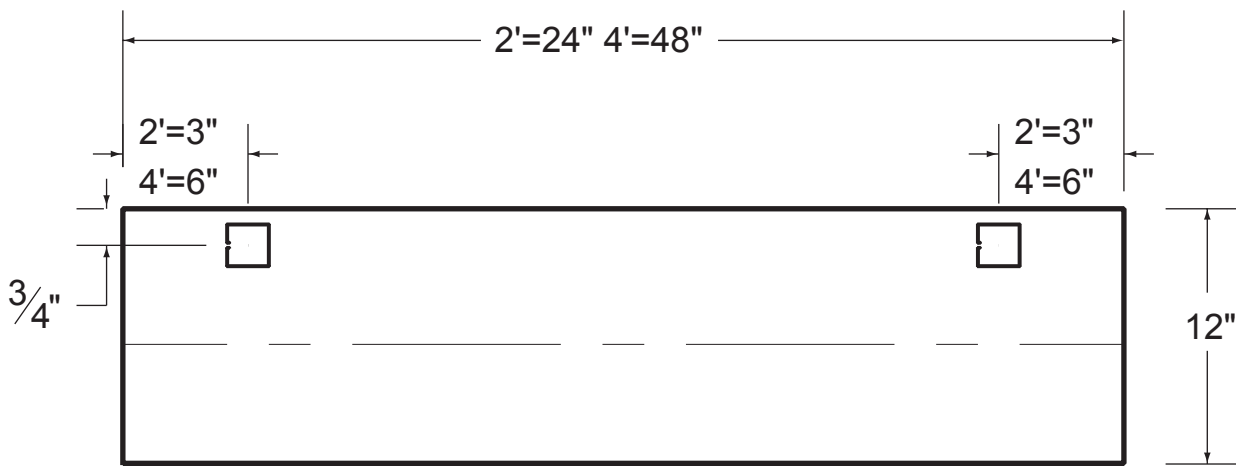
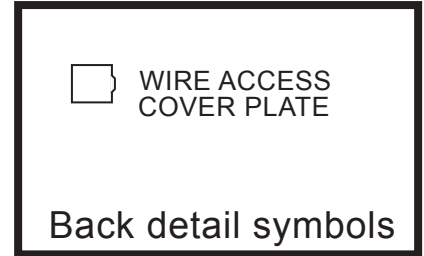
1. 12A DENOTES AN ACRYLIC .125 PATTERN 12 LENS PROVIDED AS STANDARD UNLESS A SHIELDING OPTION IS SPECIFIED
2. NOT SUITABLE FOR HARSH ENVIRONMENTS
3. GASKETING PROVIDED FOR FIELD INSTALLATION
4. FLANGED FIXTURE NOT AVAILABLE

MANUFACTURING
1715 KIBBY ROAD - MERCED - CALIFORNIA - 95340
(209) 723-9120 - FAX: (209) 723-9131

SALES OFFICE
14722 WICKS BLVD. - SAN LEANDRO - CALIFORNIA - 94577-6718
(510) 667-6950 - FAX: (510) 667-6959

series 331.ai
021210

BACK DETAIL



NOTE
All fixtures must be installed,
wired and grounded in accordance
with the National Electric Code and all
other applicable codes.

!!! WARNING !!!
RISK OF FIRE OR ELECTRICAL SHOCK. ELECTRICAL
PARTS MAY BE DAMAGED WHEN DRILLING OR USING
"TEK" SCREWS FOR INSTALLATION OF MOUNTING
HARDWARE. CHECK ENCLOSED WIRING AND
COMPONENTS. USE CAUTION WHEN DRILLING "TEK"
SCREWS INTO A BLIND AREA. TO PREVENT WIRING
DAMAGE DO NOT EXPOSE WIRING TO SHARP EDGES.

