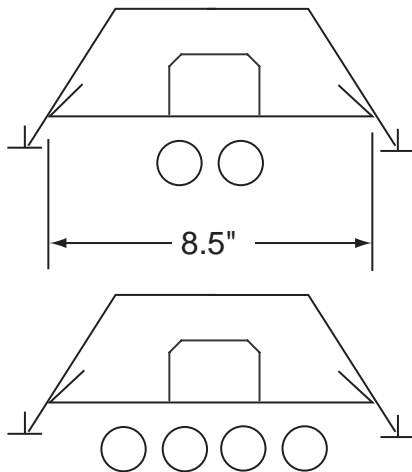
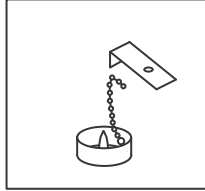


**Bead Chain
Mounting
System**



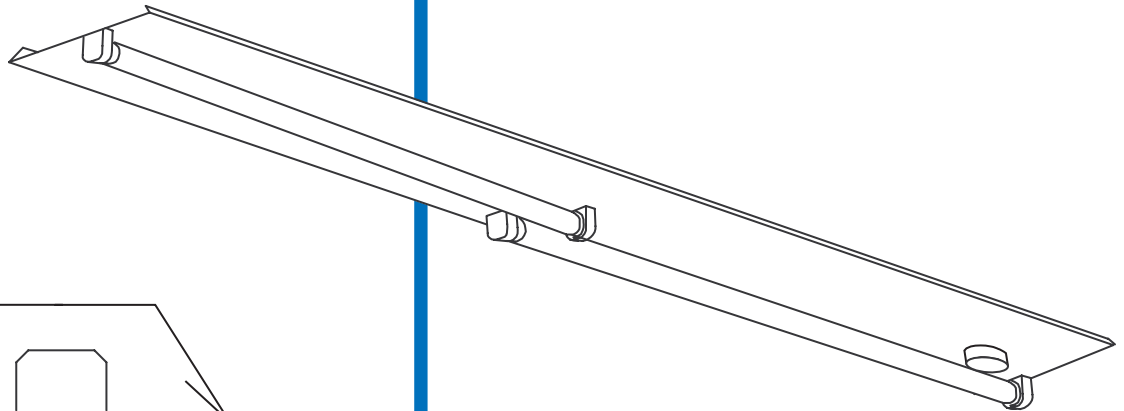
FEATURES:

- CONVERTS 12 INCH WIDE RECESSED FIXTURES TO STATE OF THE ART ENERGY SAVING T8 TECHNOLOGY
- DESIGNED TO DIRECTLY INCREASE EFFICIENCY OF RECESSED FIXTURES, IMPROVING LIGHT DISTRIBUTION AND INCREASING LIGHT LEVELS
- PATENTED BEAD CHAIN MOUNTING SYSTEM REDUCES INSTALLATION AND MAINTENANCE TIME
- STAGGERED LAMP DESIGN ALLOWS USE OF 4 FOOT T8 LAMPS
- POST PAINTED HIGH REFLECTANCE POWDER COAT FINISH

series R316.ai
021115

SERIES R316

Recessed Open Fixture
Pre-Wired RetroFit Assembly



UNION MADE IN THE USA.

ORDERING:

NOMINAL SIZE	LAMPS	CATALOG NUMBER
8"X 4'	2-FO17	R316-124-2T8
8"X 8'	2-FO32	R316-148-2T8
8"X 4'	4-FO17	R316-224-2T8
8"X 8'	4-FO32	R316-248-2T8

INSERT VOLTAGE AT END OF CATALOG NUMBER

NOTES:

1. FITS FIXTURES WITH PERPENDICULAR INTERNAL END CAPS
2. FOR FIXTURES WITH ANGLED INTERNAL END CAPS REFER TO THE WELLMADE SERIES R314 RETROFIT ASSEMBLY
3. UNIT LENGTH IS 95.13"

MANUFACTURING
1715 KIBBY ROAD - MERCED - CALIFORNIA - 95340
(209) 723-9120 - FAX: (209) 723-9131

SALES OFFICE
14722 WICKS BLVD. - SAN LEANDRO - CALIFORNIA - 94577-6718
(510) 667-6950 - FAX: (510) 667-6959

INSTALLATION INSTRUCTIONS

TURN OFF POWER TO FIXTURE BEING RETROFITTED.

REMOVE EXISTING LAMPS.

REMOVE EXISTING BALLAST / WIRE WAY COVER(S).

CUT POWER LEADS TO EXISTING BALLAST.

REMOVE EXISTING SOCKET PLATES.

REMOVE EXISTING BALLAST (DISPOSE IN ACCORDANCE WITH LOCAL CODES).

"TEK" SCREW MOUNTING ANGLE TO TOP OF HOUSING, INDEXING OFF 7/8" KNOCK OUT.

PULL 2 - 3 INCHES OF BEAD-CHAIN THROUGH KEY- HOLE SLOT IN MOUNTING ANGLE AND SECURE.

CONNECT BALLAST LEADS AND GROUND TO APPROPRIATE EXISTING CONNECTIONS THEREIN EXISTING HOUSING.

ONCE CONNECTION IS MADE PRESS R316 TIGHTLY AGAINST EXISTING HOUSING AND SECURE BY PULLING CHAIN THROUGH HOLE. ONCE HOUSING IS SNUG, SECURE CHAIN BY SLIDING INTO SLOT.

WHEN HOUSING IS SECURE COIL EXCESS BEAD-CHAIN INTO CAP AND PUSH ARROW CLIP INTO HOLE IN HOUSING.

TO REMOVE CAP PULL LIGHTLY AND DISENGAGE ARROW CLIP.

INSTALL LAMPS AND TURN ON POWER.

NOTE

All fixtures must be installed, wired and grounded in accordance with the National Electric Code and all other applicable codes.

!!! WARNING !!!

RISK OF FIRE OR ELECTRICAL SHOCK. ELECTRICAL PARTS MAY BE DAMAGED WHEN DRILLING OR USING "TEK" SCREWS FOR INSTALLATION OF MOUNTING HARDWARE. CHECK ENCLOSED WIRING AND COMPONENTS. USE CAUTION WHEN DRILLING "TEK" SCREWS INTO A BLIND AREA. TO PREVENT WIRING DAMAGE DO NOT EXPOSE WIRING TO SHARP EDGES.

